



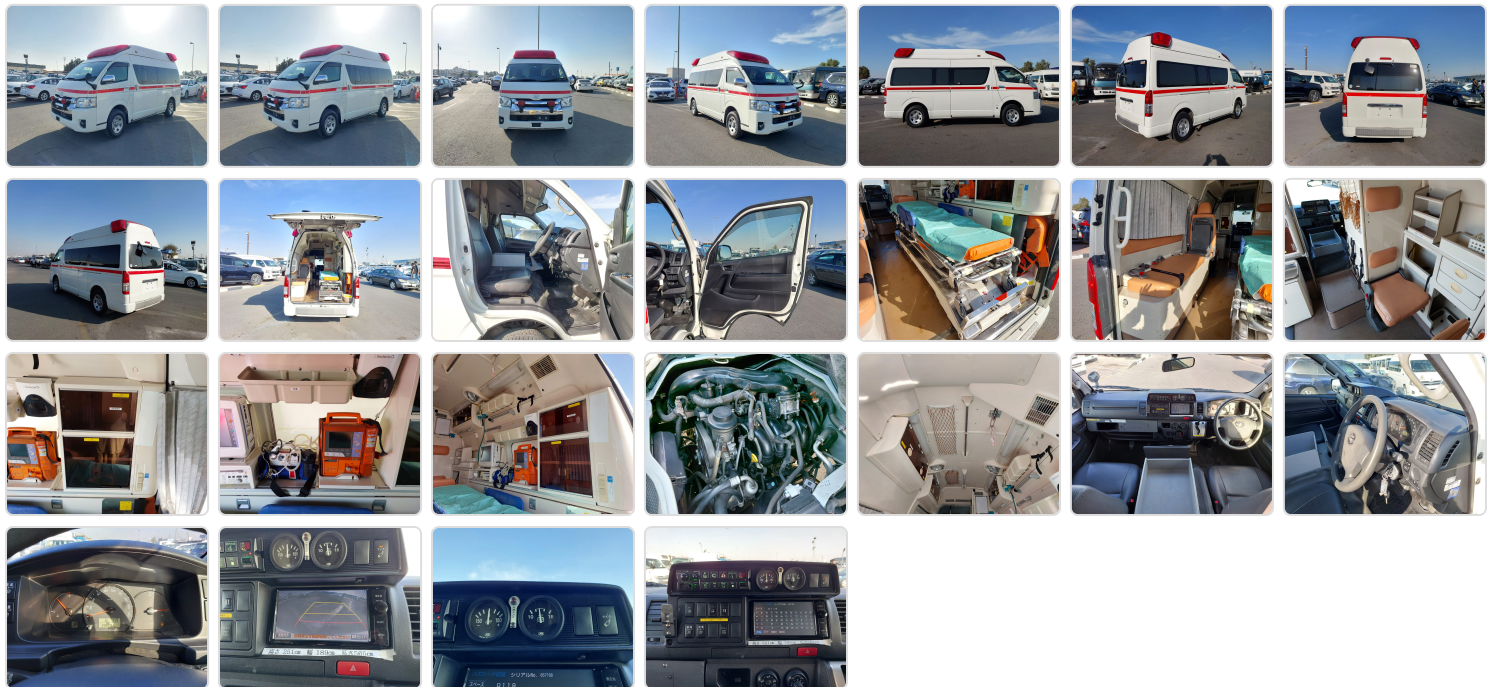
TOYOTA HIACE AMBULANCE
Stock ID 044057

Registration Year: 2015
Manufacture Year: 2015

Vehicle Specifications

Model:		Chassis No:	TRH226-0015323	Grade:		Fuel:	Petrol
Engine:	2TR	Drive Train:	4WD	Dimensions:	28 M ³	Shape:	VAN
Engine No:	2023	Transmission:	AT	Mileage:	339041	Capacity:	2700cc
Ext. Color:		Weight (kg):		Seats:	6	Color:	
Certification:		Classification:		Exterior:	WHITE	Interior:	GRAY

Vehicle images



Vehicle Options

Pwr Steering	<i>Yes</i>	Pwr Wind	<i>Yes</i>	Pwr Mirrors	Center Lock	<i>Yes</i>	Air Cond	<i>Yes</i>
Reverse Camera	<i>Yes</i>	Pwr Slide Door		Easy Closer	Cruise Control		ABS	
Air Bag		Fog Lamps		HID Head Lamps	LED Head Lamps		Spare Key	
Remote Key		Push Start		Seat Heater	Pwr Seat		Leather Seat	
Floor Mat		Sun Roof		Alloy Wheels	Grill Guard		Rear Wiper	
Rear Spoiler		Stereo (FULL)		Navi/TV	CD Player		Car MD	
AUX		Spare Tire		Spare Tire Case	Puncture Repairing Kit		Tool	
Jack		Operators Manual		Maint. Record	360 Degree Camera		AM/FM Radio	
4WD	<i>Yes</i>	2WD		Back Tire	TV		Body Kit	
Side Skirts		Front Lip Spoiler		Turbo	Side Airbag		Wheel Spanner	
ESC		Keyless Entry						

