



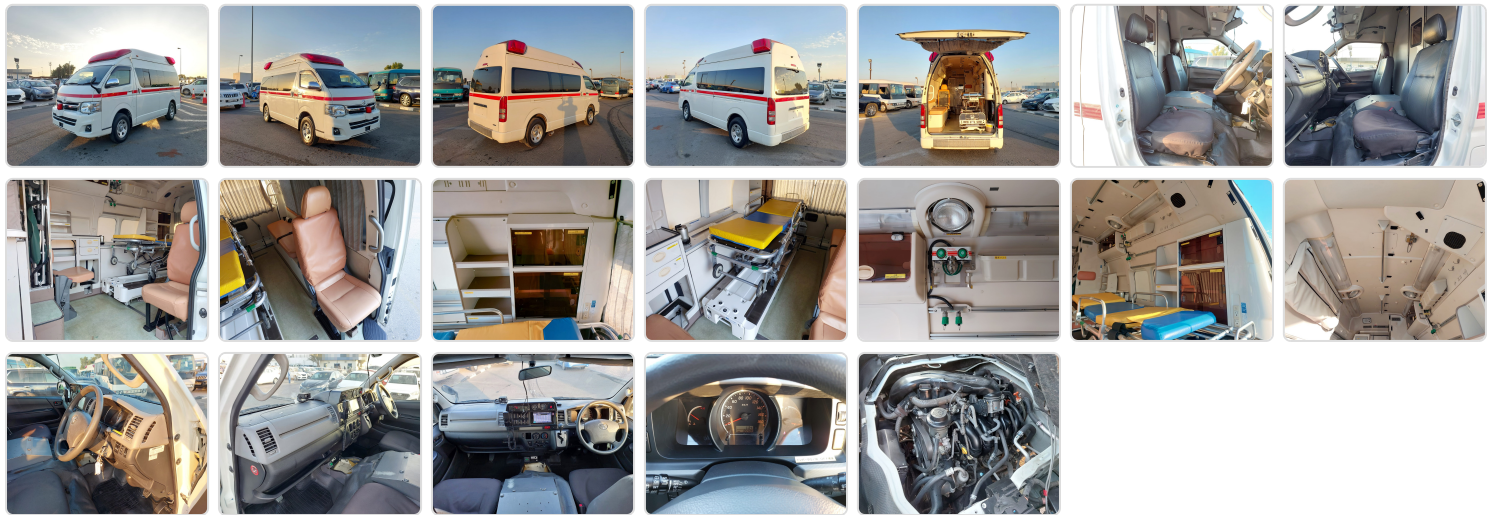
**TOYOTA HIACE AMBULANCE**  
Stock ID 696267

**Registration Year: 2013**  
**Manufacture Year: 0**

## Vehicle Specifications

<b>Model:</b>		<b>Chassis No:</b>	TRH226-0012450	<b>Grade:</b>		<b>Fuel:</b>	Petrol
<b>Engine:</b>	2TR-FE	<b>Drive Train:</b>	4WD	<b>Dimensions:</b>	28 M <sup>3</sup>	<b>Shape:</b>	VAN
<b>Engine No:</b>	2023	<b>Transmission:</b>	AT	<b>Mileage:</b>	135500	<b>Capacity:</b>	2700cc
<b>Ext. Color:</b>		<b>Weight (kg):</b>		<b>Seats:</b>	6	<b>Color:</b>	
<b>Certification:</b>		<b>Classification:</b>		<b>Exterior:</b>	WHITE RED	<b>Interior:</b>	BLACK

## Vehicle images



## Vehicle Options

Pwr Steering	<i>Yes</i>	Pwr Wind	<i>Yes</i>	Pwr Mirrors	Center Lock	<i>Yes</i>	Air Cond	<i>Yes</i>
Reverse Camera		Pwr Slide Door		Easy Closer	Cruise Control		ABS	
Air Bag		Fog Lamps		HID Head Lamps	LED Head Lamps		Spare Key	
Remote Key		Push Start		Seat Heater	Pwr Seat		Leather Seat	
Floor Mat		Sun Roof		Alloy Wheels	Grill Guard		Rear Wiper	
Rear Spoiler		Stereo (FULL)		Navi/TV	CD Player		Car MD	
AUX		Spare Tire		Spare Tire Case	Puncture Repairing Kit		Tool	
Jack		Operators Manual		Maint. Record	360 Degree Camera		AM/FM Radio	
4WD	<i>Yes</i>	2WD		Back Tire	TV		Body Kit	
Side Skirts		Front Lip Spoiler		Turbo	Side Airbag		Wheel Spanner	
ESC		Keyless Entry						

